

**Project Name:** \_\_\_\_\_  
**Part Number:** \_\_\_\_\_ **Date:** \_\_\_\_\_

**Features**

- Passive Infrared (PIR) Motion sensor
- Bluetooth wireless technology
- Occupancy and daylight sensors
- Water-tight/water-proof (IP65)
- 0-10V dimming, CLC, bi-level set-points, ON/OFF
- Deck level configuration



ASHRAE 90.1 Compliant



The Douglas Lighting Controls® **Bluetooth** Fixture Controller & Sensor provides automated individual and group control of light fixtures using onboard sensors and Bluetooth technology.

The Douglas Lighting Controls Bluetooth Fixture Controller & Sensor is easily installed for ON/OFF or bi-level light functionality. The daylight sensor provides additional energy savings by adjusting (0-10V dimming) the lights to work with the amount of natural daylight available in open-sided parking garages or from windows.

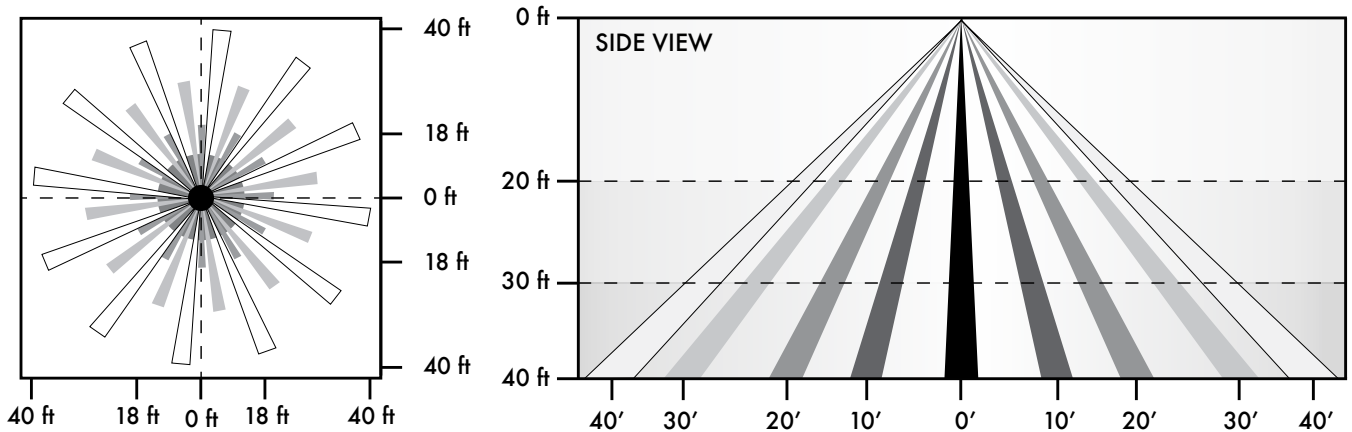
Configuration of the Douglas Lighting Controls Fixture Controller & Sensor is done conveniently at deck level with our free Smartphone App using Bluetooth protocol to communicate with the device. A Bluetooth mesh network is created between devices for control over a group of Douglas Lighting Controls Bluetooth Fixture Controller & Sensors.

The Controller & Sensor has a maximum vertical range of 40 feet and is powered from the fixture. It is tested to applicable UL and CSA standards and enables users to meet ASHRAE 90.1 and Title 24 energy code requirements. Once the device(s) are configured, the system will automatically operate to control lighting based on occupancy in the area and the system settings.

**Typical Applications:** Parking Garages – Warehouses - Manufacturing Facilities

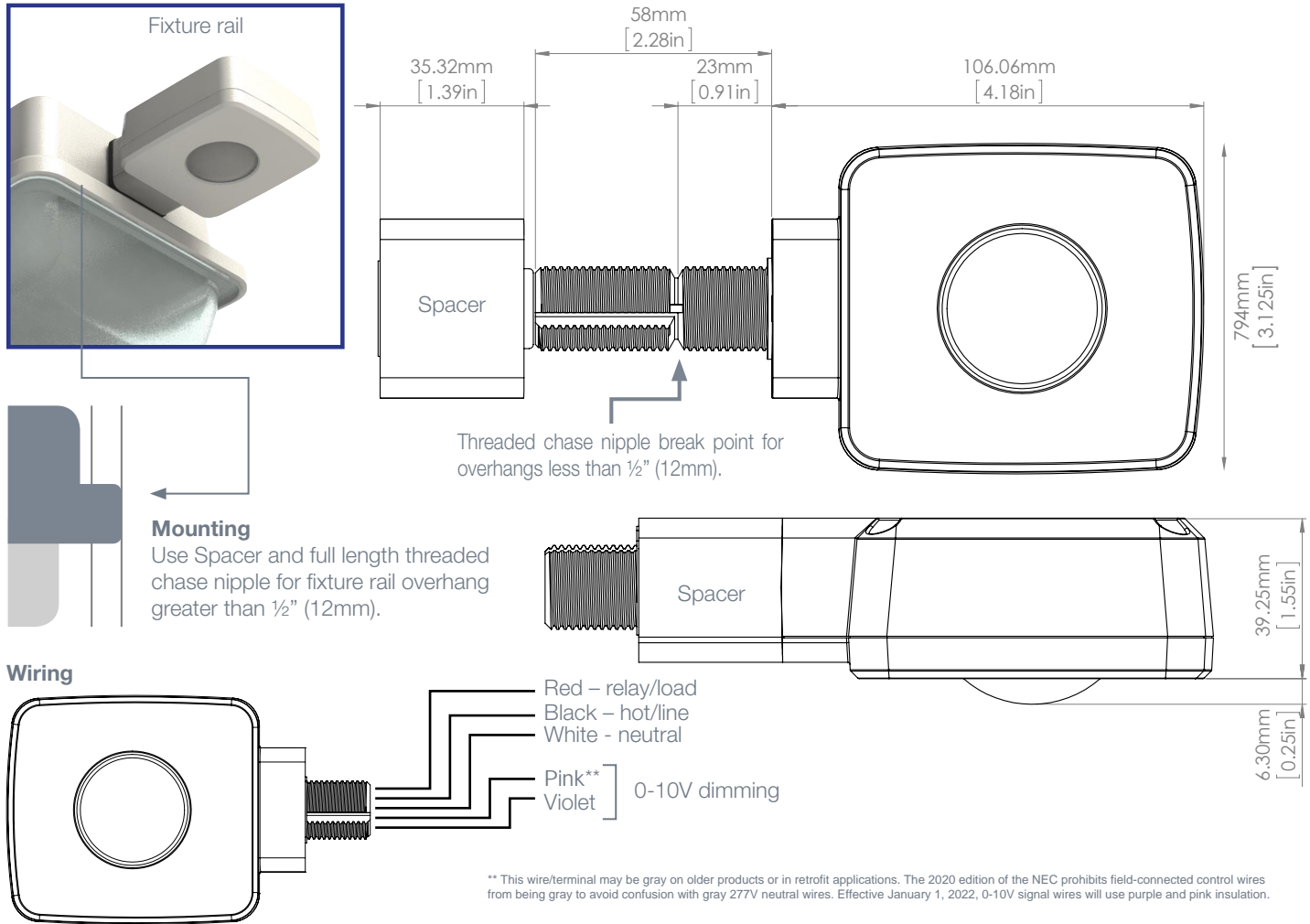
PART NUMBER	DESCRIPTION
BT-FMS-A	Bluetooth enabled fixture mounted occupancy/daylight sensor and controller

**Coverage**



**Coverage Area**

- Mounted at 20 ft = 1256 sqft
- Mounted at 30 ft = 2827 sqft
- Mounted at 40 ft = 5026 sqft



<b>FUNCTIONALITY</b>	PIR Motion Sensing Occupancy, CLC, bi-level level light set point, ON/OFF, adjustable OFF delay Download Douglas Lighting Controls App from Apple App store for configuration For Installation with field-installed conductors of 60°C (140°F) minimum rating See Installation Manual for complete details	
<b>INPUT VOLTAGE</b>	120/277/347VAC 60Hz	
<b>WIRELESS RANGE</b>	150' Clear line of site. 50' through standard walls (distances may vary based on location and environment. Additional devices may be required at time of commissioning to ensure Bluetooth network integrity.)	
<b>INDICATORS</b>	Green LED, located behind lens, flashes at 1 second intervals when BT-FMS is unassociated with a network Orange LED, located behind lens, and fixture(s) controlled by BT-FMS, will flash when BT-APP is used to "attention" device Green LED, located behind lens, will flash to indicated occupancy/motion detection	
<b>ENVIRONMENT</b>	Outdoor use, Ingress Protection Rating: IP65 Operating temperature: -40°F to 131°F (-40°C to 55°C)	Storage temperature: -40°F to 140°F (-40°C to 60°C)
<b>OCC. SENSOR RANGE</b>	Up to 40 feet	
<b>INDICATORS</b>	Green LED, located behind lens, flashes at 1 second intervals when BT-FMS is unassociated with a network Orange LED, located behind lens, and fixture(s) controlled by BT-FMS, will flash when BT-APP is used to "attention" device Green LED, located behind lens, will flash to indicated occupancy/motion detection	
<b>ENVIRONMENT</b>	Outdoor use, Ingress Protection Rating: IP65 Operating temperature: -40°F to 131°F (-40°C to 55°C)	Storage temperature: -40°F to 140°F (-40°C to 60°C)
<b>LOAD RATINGS</b>	800W @ 120VAC standard ballast 1200W @ 277VAC standard ballast	3300W @ 277VAC electronic ballast 1500W @ 347VAC standard ballast
<b>DIMMING</b>	0-10V; 25mA current sinking maximum	
<b>APPROVALS</b>	Conforms to UL STD. 508 Certified to CSA STD. C22.2 #14	Contains IC: 8254A-B1010SP0 Contains FCC ID: W7Z-B1010SP0
<b>WARRANTY</b>	Standard 1-year	